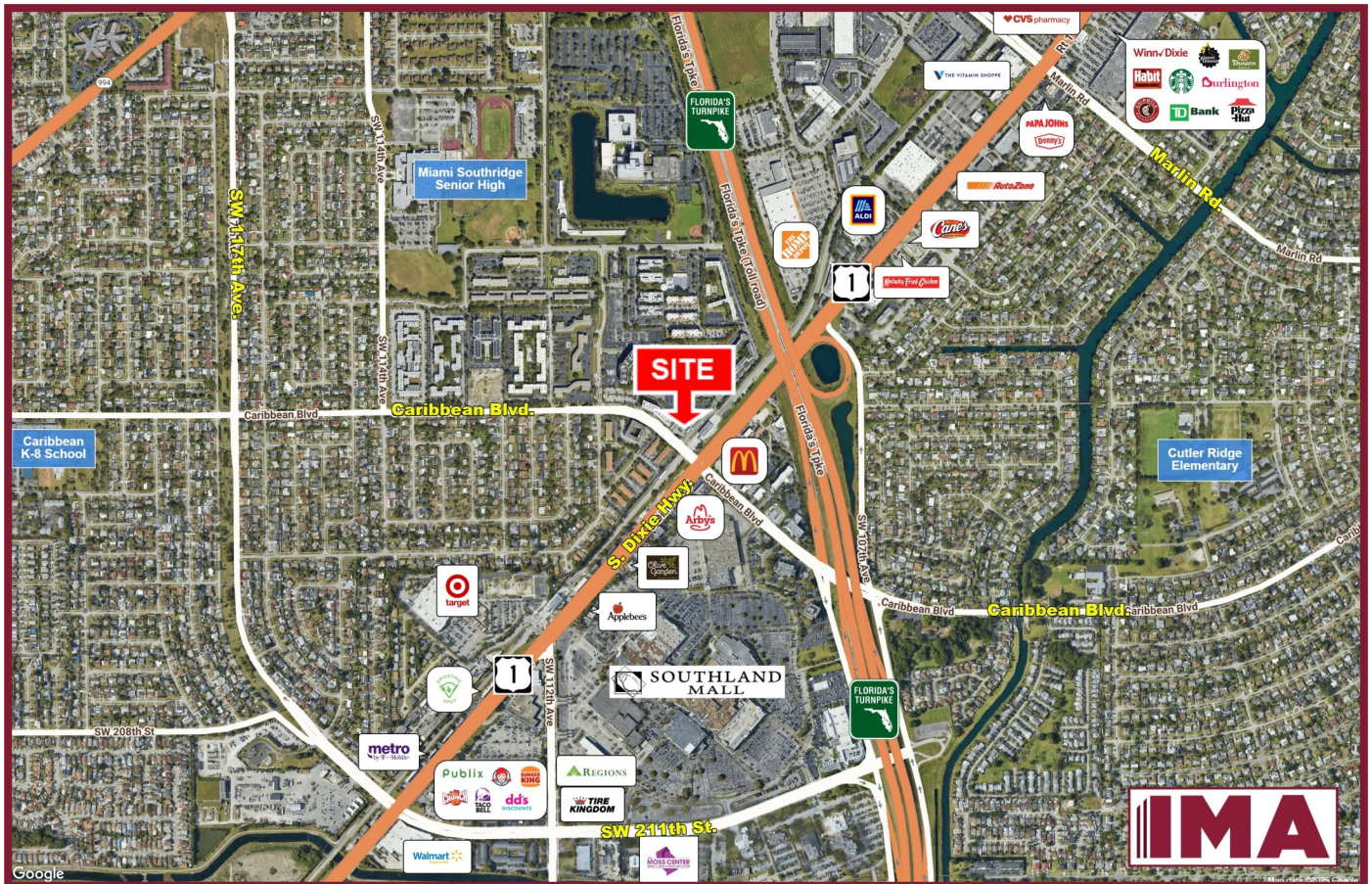


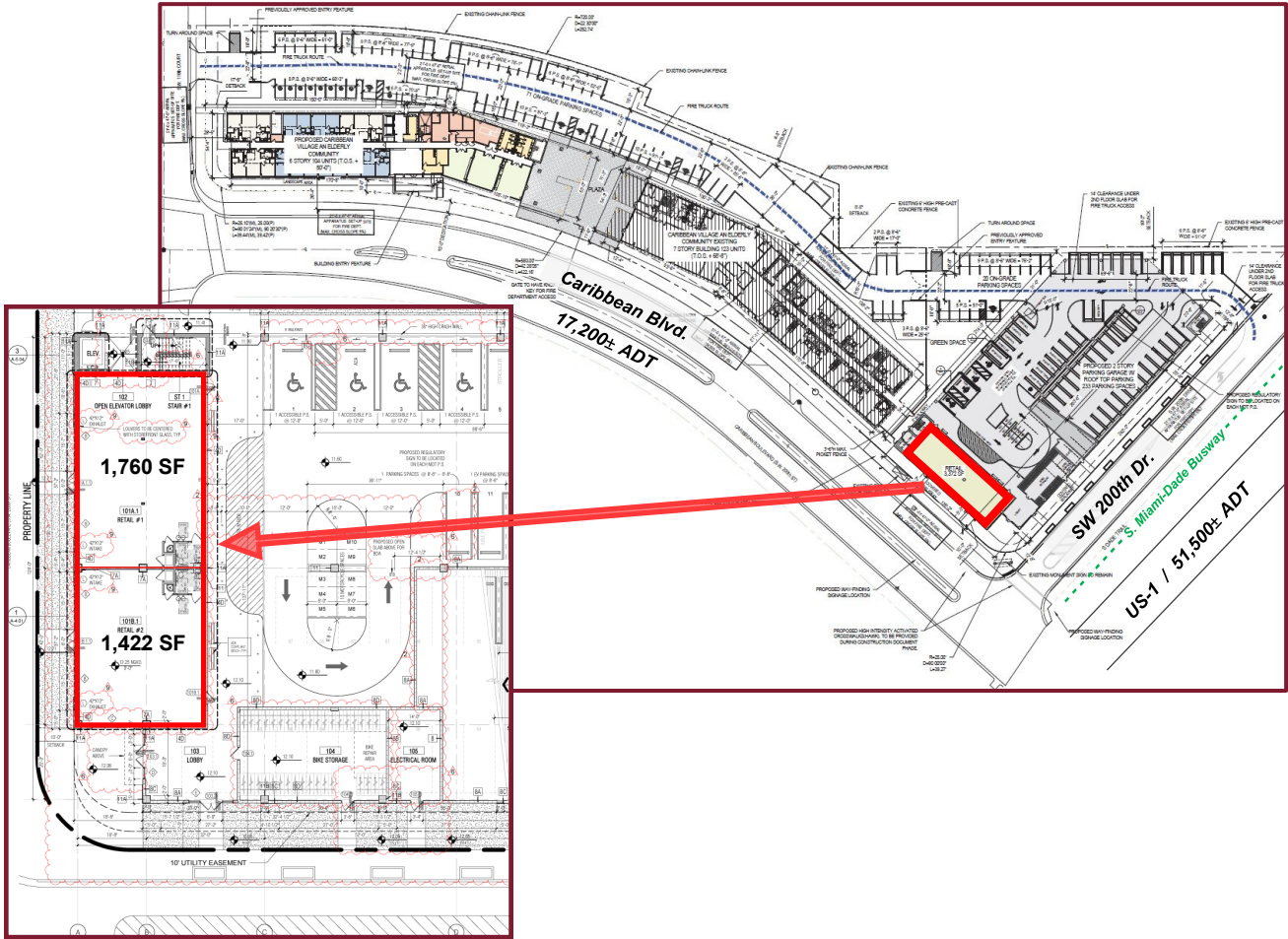
CARIBBEAN ISLES



NEW GROUND FLOOR RETAIL SPACE
19775 SW 100th Court, Cutler Bay, FL 33157



CARIBBEAN ISLES



SIZE: 1,760 SF & 1,422 SF | Can Combine for a total of 3,182 SF

POPULATION: 1 Mile: 20,847 3 Mile: 148,453 5 Mile: 278,489

AVERAGE HH INCOME: 1 Mile: \$68,208 3 Mile: \$102,696 5 Mile: \$116,179

TRAFFIC COUNT: 68,700 ± ADT

PROPERTY HIGHLIGHTS:

- Caribbean Isles is a transit-oriented 265-unit development just west of US-1 along Caribbean Boulevard
- Brand new ground floor retail adjacent to the new rapid-transit busway stop
- Located just one block from the Florida Turnpike
- Surrounded by established residential communities and national retailers including: The Home Depot, Aldi, Macy's, LA Fitness, Olive Garden, Target, Walmart, Publix
- Estimated completion date: September 2025

FOR LEASING INFORMATION

INVESTMENT MANAGEMENT ASSOCIATES
2151 S. Le Jeune Road, Suite 202
Coral Gables, FL 33134



T: 305.661.0110 | www.ima-re.com | F: 305.661.7803

Any information herewith is obtained from sources we consider reliable. However, we are not responsible for misstatement of facts, errors, omissions, prior sale, withdrawal from market, modification of mortgage commitment, terms and conditions or change in price without notice. The information supplied herein is for informational purposes only and shall not constitute a warranty of assurance that said information is correct. Any person intending to rely upon the information supplied herein should verify said information independently.