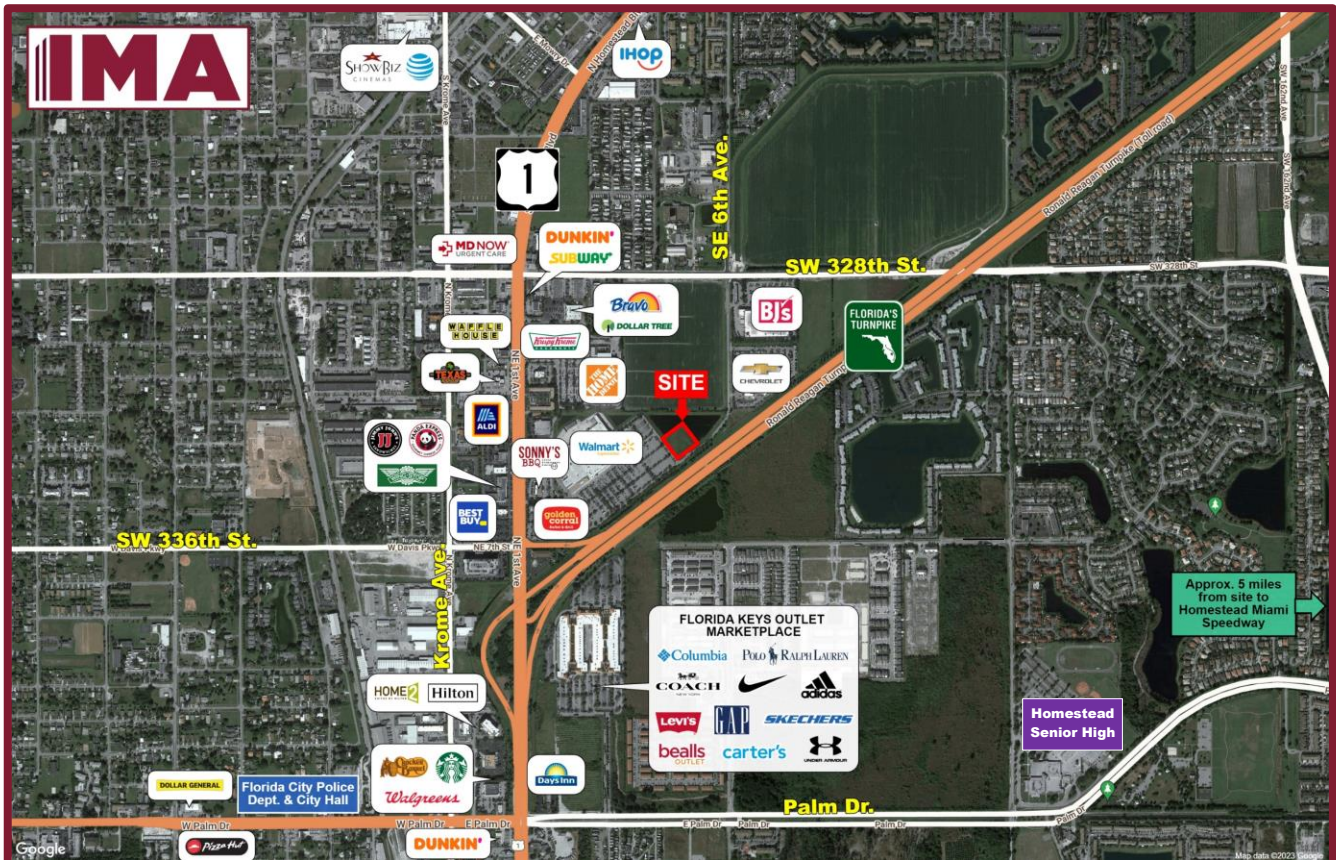


# FOR SALE

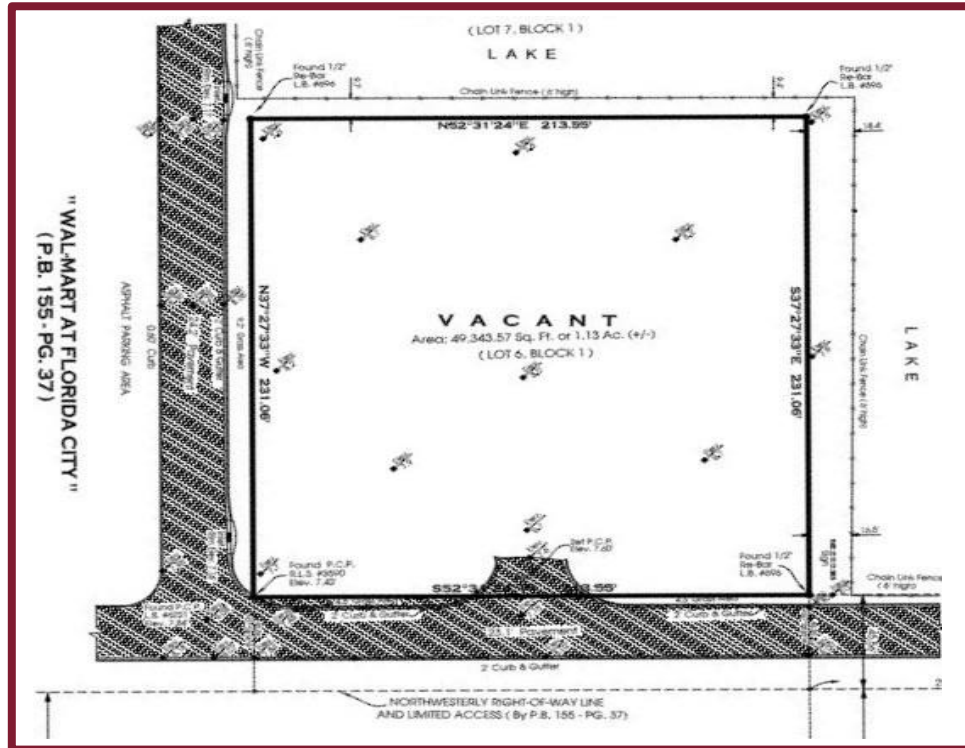


## Prime Commercial Outparcel US-1 & Florida Turnpike, Florida City, FL

*Walmart Supercenter Shadow Anchor  
Spectacular Visibility to Florida Turnpike*



# PRIME OUTPARCEL FOR SALE



**SIZE:** 1.14 Acres ± | **ZONING:** C-2 Commercial

**POPULATION:** 3 Mile: 93,948 5 Mile: 145,322

**AVERAGE HOUSEHOLD INCOME:** 3 Mile: \$50,111 5 Mile: \$56,493

**TRAFFIC COUNT:** US-1: 35,500± ADT | **Florida Turnpike:** 49,000± ADT

## HIGHLIGHTS:

- Located just east of US-1, fronting the Florida Turnpike, this parcel is adjacent to a Walmart Supercenter with close proximity to a Chevrolet Dealership, BJ's Wholesale and Home Depot.
- Florida Keys Outlet Marketplace down the street, with 50+ Stores, including Adidas, Coach, Polo Ralph Lauren, Levi's, Columbia, Nike, GAP, Under Armour, Famous Footwear, Bealls, Carter's, Guess, Nautica, Sunglass Hut, etc.
- Solid residential community with explosive growth.
- Approximately 5 miles from Homestead Miami Speedway.
- **Hotels:** Baymont by Wyndham, Home2 Suites by Hilton, Tru by Hilton, Days Inn by Wyndham, Fairway Inn, Best Western, Travelodge, Quality Inn, etc.
- **Restaurants:** Sonny's BBQ, Texas Roadhouse, Cracker Barrel, Starbucks, Waffle House, Panda Express, Dunkin', Krispy Kreme, Golden Corral, Wingstop, Jimmy John's, Little Caesars, and more.

## FOR LEASING INFORMATION



**INVESTMENT MANAGEMENT ASSOCIATES, INC.**  
2151 S. Le Jeune Road, Suite 202  
Coral Gables, Florida 33134

**T: 305.661.0110 | [www.ima-re.com](http://www.ima-re.com)**

