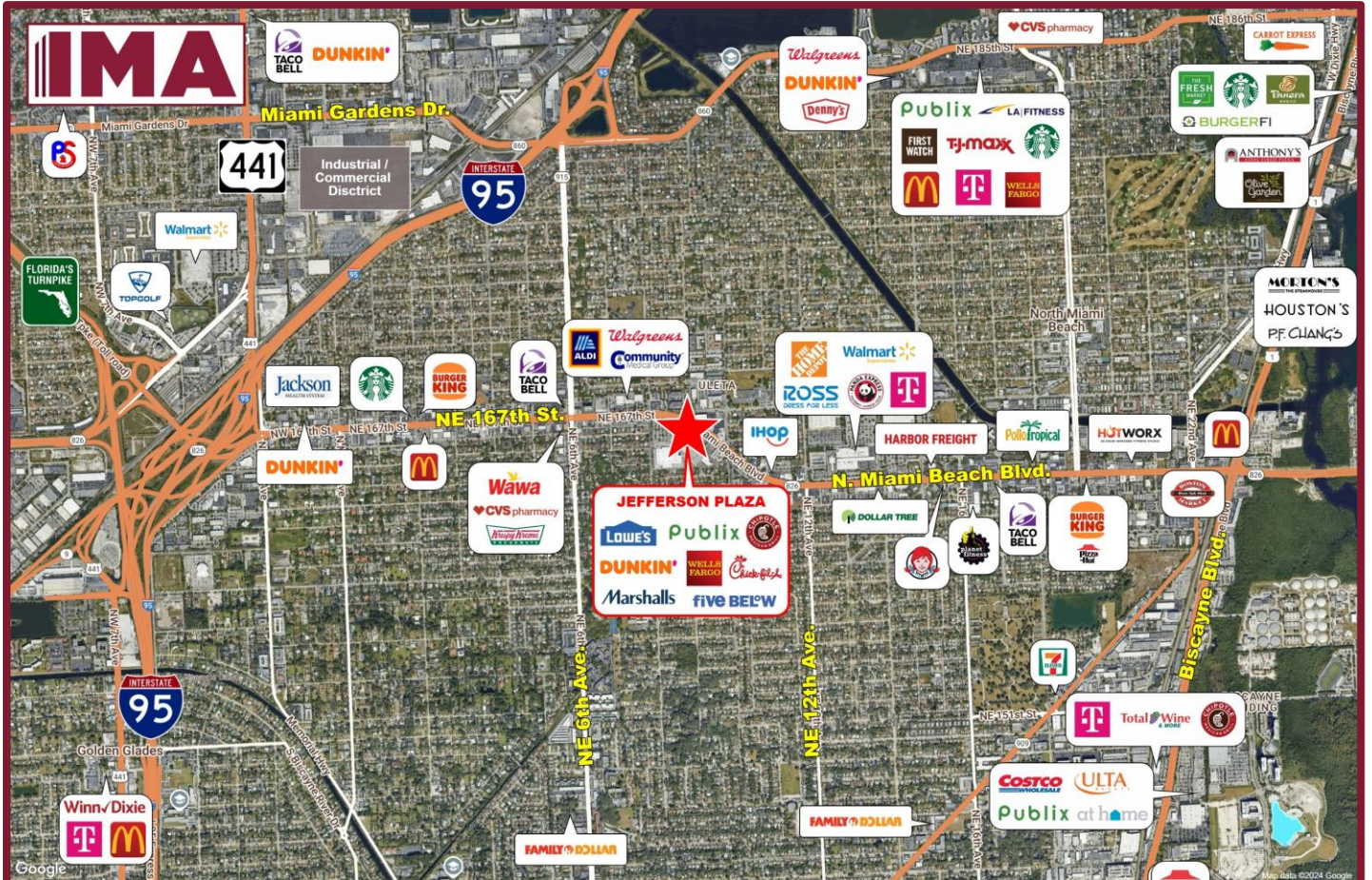


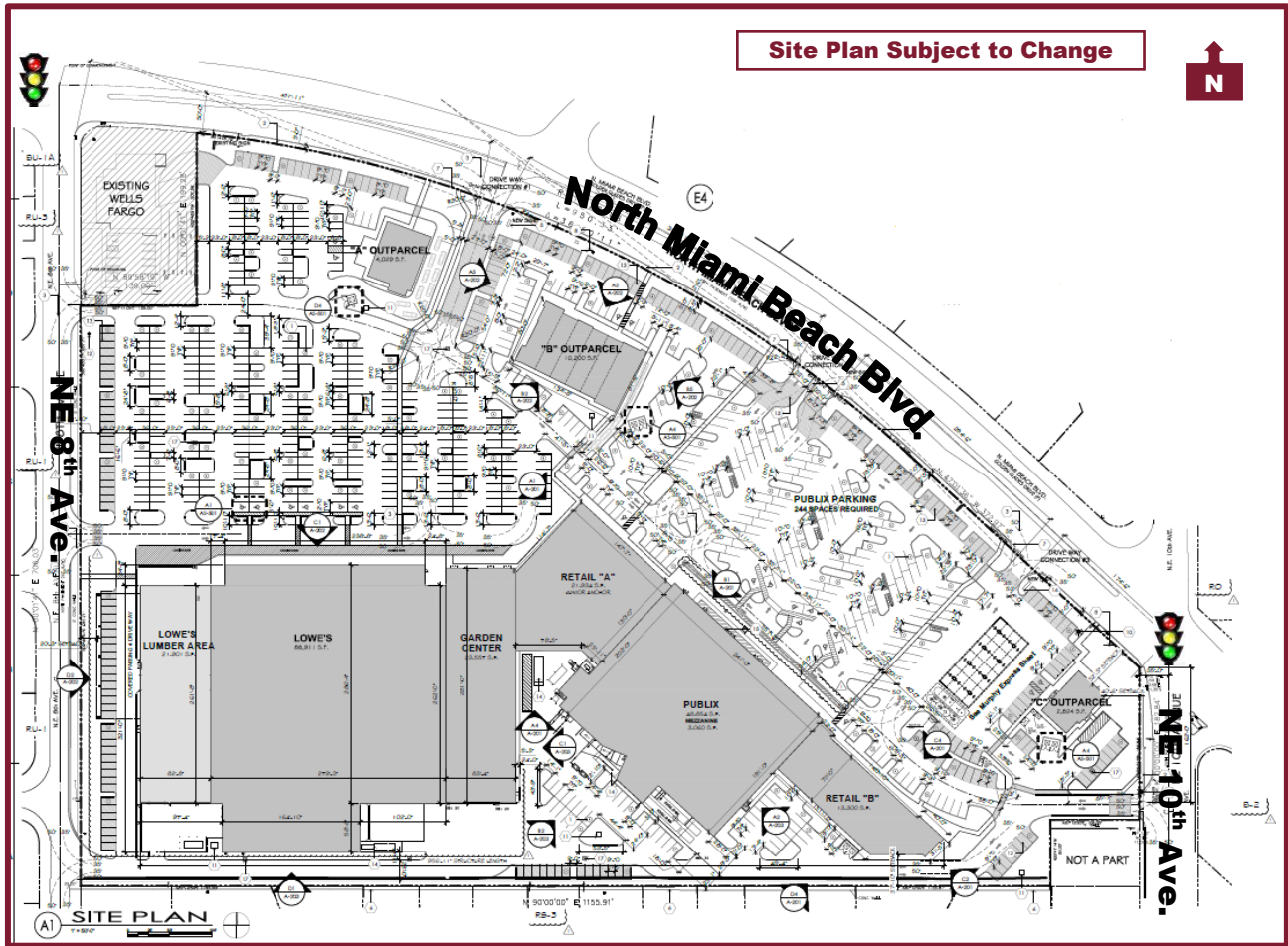
JEFFERSON PLAZA



N. Miami Beach Blvd. & NE 8th-10th Ave., N. Miami Beach, FL



JEFFERSON PLAZA



SIZE: 200,000± SF

POPULATION: 1 Mile: 26,363 3 Mile: 202,320 5 Mile: 505,151

AVERAGE HOUSEHOLD INCOME: 1 Mile: \$98,862 3 Mile: \$88,304 5 Mile: \$104,539

TRAFFIC COUNT: 57,000+ ADT (N. Miami Beach Blvd./NE 167th St.)

HIGHLIGHTS:

- Join Publix, Lowe's, Marshalls, Chipotle, Dunkin', Five Below, Chick-fil-A, Wells Fargo, Aspen Dental, AT&T and Smoothie.
- Located on SR 826 (NE 167th St./N. Miami Beach Blvd./NE 163rd St.) a major east-west artery, connecting the Golden Glades Interchange to US-1/Biscayne Boulevard and the Beaches.
- Surrounded by dense, established residential neighborhoods.
- A central retail location on an established commercial corridor, with Mall at 163rd Street just around the corner.

FOR LEASING INFORMATION

INVESTMENT MANAGEMENT ASSOCIATES, INC.
2151 S. Le Jeune Road, Suite 202
Coral Gables, FL 33134

T: 305.661.0110 | www.ima-re.com



Any information herewith is obtained from sources we consider reliable. However, we are not responsible for misstatement of facts, errors, omissions, prior sale, withdrawal from market, modification of mortgage commitment, terms and conditions or change in price without notice. The information supplied herein is for informational purposes only and shall not constitute a warranty of assurance that said information is correct. Any person intending to rely upon the information supplied herein should verify said information independently.