

# SPRINGS CIRCLE CENTRE

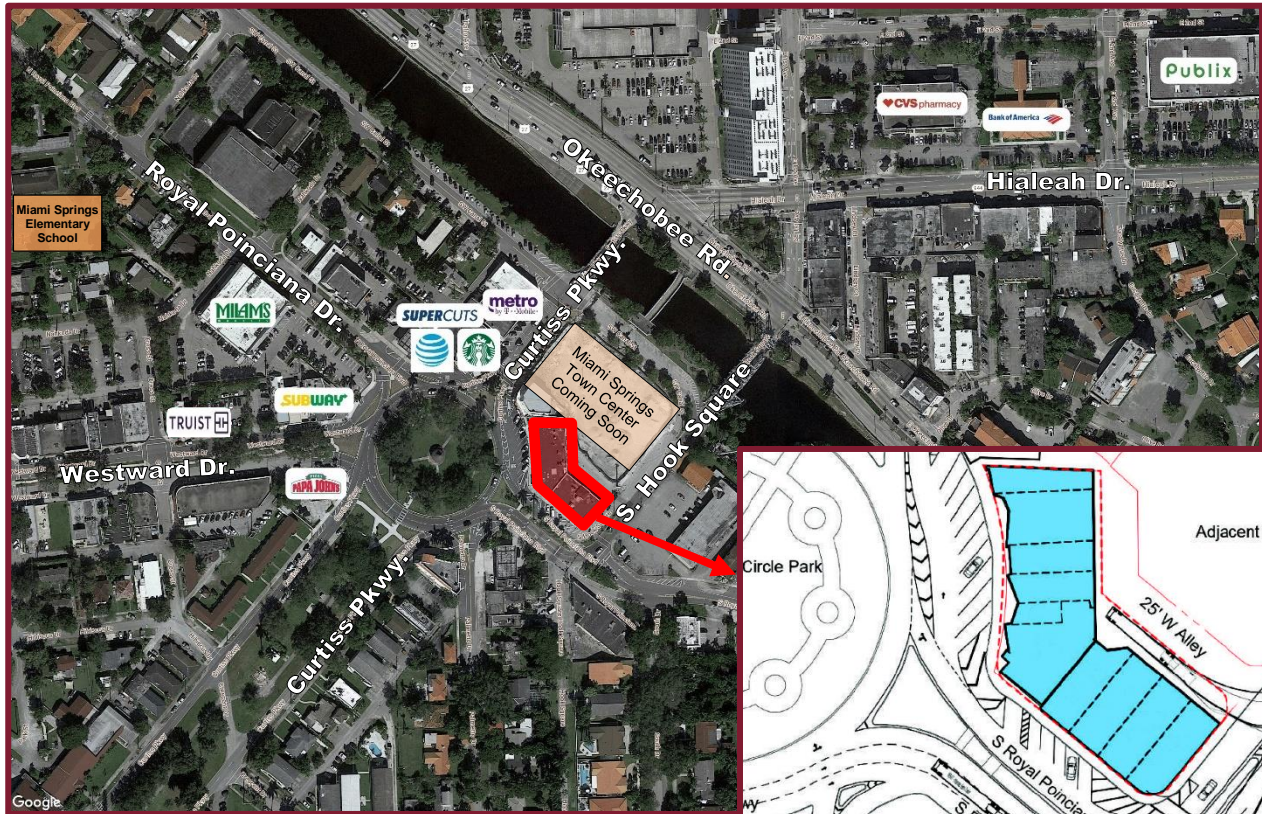


**1 S. Royal Poinciana Blvd., Miami Springs, FL**  
*@ The Miami Springs Circle*





# SPRINGS CIRCLE CENTRE



**POPULATION:** 1 Mile: 28,561 3 Mile: 150,904 5 Mile: 535,426

**AVERAGE HOUSEHOLD INCOME:** 1 Mile: \$61,075 3 Mile: \$56,482 5 Mile: \$59,676

**TRAFFIC COUNT:** 30,000± ADT | Okeechobee Rd: 58,500± ADT

## PROPERTY HIGHLIGHTS:

- Newly renovated center on Miami Springs Circle with expected delivery in December 2022
- Over 30,000 square feet of street retail with overflow parking across the street. Projected 12 units from 1,000 SF to 10,000 SF
- Prime location in the heart of Miami Springs on the SE corner of Miami Springs Circle
- High foot traffic and excellent visibility
- Prime access from neighboring dense and robust Hialeah marketplace through Curtis Parkway Bridge and pedestrian bridge
- Businesses nearby include Milams Market, Starbucks, AT&T, Papa John's, CVS, Publix, Subway, Truist, USPS, Miami Springs City Hall and Police Department

## FOR LEASING INFORMATION



**INVESTMENT MANAGEMENT ASSOCIATES, INC.**  
2151 S. Le Jeune Road, Suite 202  
Coral Gables, FL 33134

**T: 305.661.0110 | [www.ima-re.com](http://www.ima-re.com) | F: 305.661.7803**



Any information herewith is obtained from sources we consider reliable. However, we are not responsible for misstatement of facts, errors, omissions, prior sale, withdrawal from market, modification of mortgage commitment terms and conditions or change in price without notice. The information supplied herein is for informational purposes only and shall not constitute a warranty of assurance that said information is correct. Any person intending to rely upon the information supplied herein should verify said information independently.